

*You can reach the highest targets with us!*

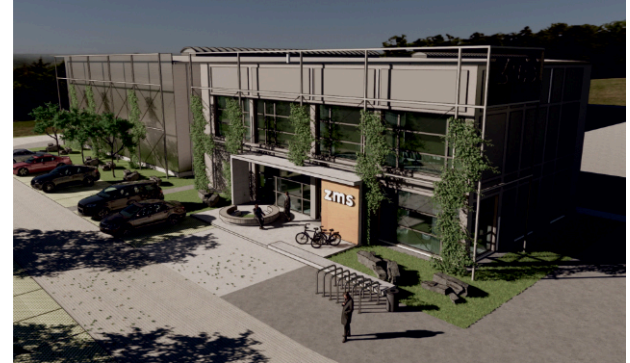


# THE MANUFACTURER OF STORAGE FACILITY AND FACTORY FLOOR ACCESSORIES AND EQUIPMENT

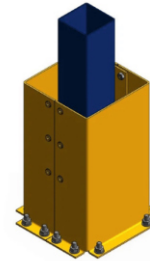
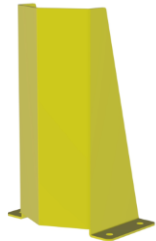
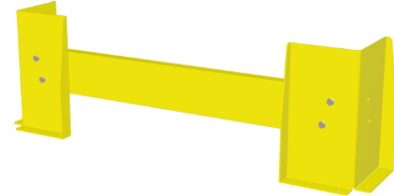
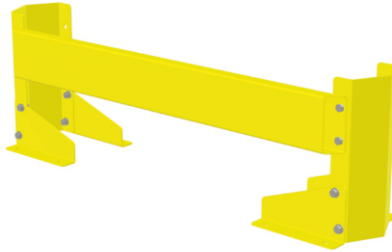
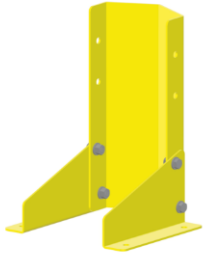
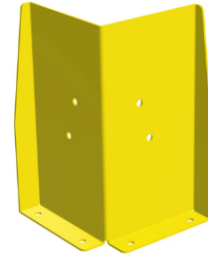
# PRODUCTION PLANT

**ZMS Systemy Magazynowe sp. z o.o.** has been growing rapidly for nearly 20 years. We supply our products to hundreds of customers in Poland, the European Union and worldwide.

Meeting the high expectations of our customers is an incredible challenge and, therefore, in October 2023 we launched another production facility based in Młyniec Drugi near Toruń. owing to this plant, we are the only company in the region that can bend long components using a press brake as well as galvanise and paint the same in the modern powder coating plant. The newly developed technology of coating metal products with powder paint using ultrasonic acceleration enables more effective protection of metal against corrosion, lengthens the life of manufactured elements as well as considers the environmental aspect of using less powder and energy.

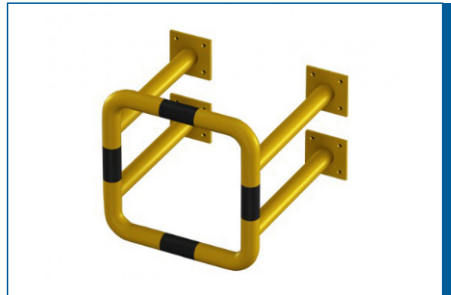


# PROTECTION AND SECURITY DEVICES FOR YOUR FACILITY





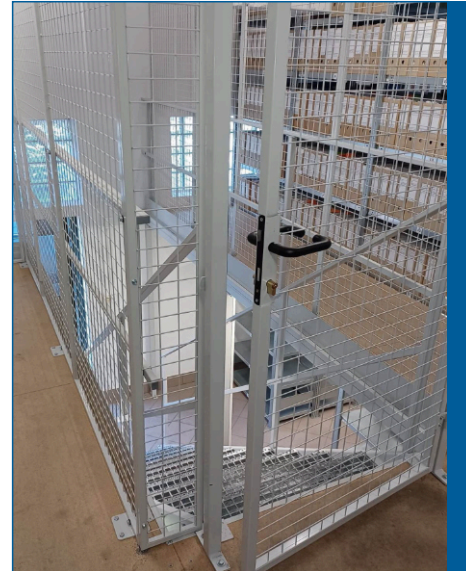
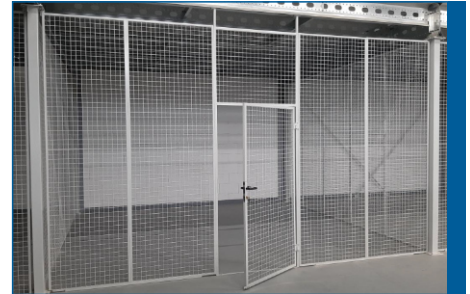
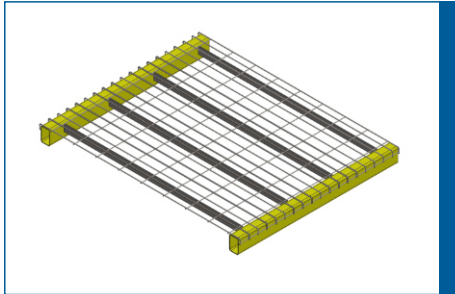
# PIPE PROTECTION GUARDS





# BARRIERS, SHELVES OR SYSTEM NET PROTECTION

*WE WILL DO THEM FOR YOU!*

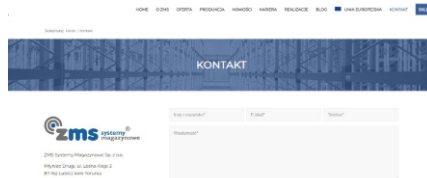


CAN'T YOU SEE THE PRODUCT YOU NEED?

GO TO [WWW.ZMS-SYSTEMY.PL/SKLEP-ZMS](http://WWW.ZMS-SYSTEMY.PL/SKLEP-ZMS)



OR SEND AN ENQUIRY





WE HAVE EVERYTHING THAT YOU NEED FOR YOUR WAREHOUSE OR ARE LEAST NEARLY EVERYTHING





## Machines and equipment

Our machine park includes, among others:

- Laser cutting machines for sheet metal.
- Band saws for cutting sections.
- Press brakes, including a press with its working field length of up to 6 m.
- A hydraulic guillotine.
- A bending machine for long-arm elements.
- Welding robots.
- Manual welding stations.
- A welding laser.
- A laser surface cleaning station.
- A powder coating plant with an option of painting workpieces with the length of 6 m, width of 0.85 m and height of 1.8 m.

## Production capacities

Our qualified staff and extensive machine park make it possible for us to manufacture both standard and complex parts, which cannot be made using standard commercially available machines.

- Powder coating with increased corrosion resistance owing to the developed worldwide unique patent for coating metal products with powder paint using ultrasonic acceleration.
- Powder coating of workpieces with the length of 6 m, width of 0.85 m and height of 1.8 m.
- Precision bending of workpieces with the length of up to 6 m.
- Bundle cutting of sections.
- Bending of long-arm elements.
- High precision large lot welding.
- Cleaning of surface with a laser (removal of old varnish and paint layers).

## Why choose ZMS products?

Quality, punctuality and professional services being the three words defining best the foundations of ZMS Systemy Magazynowe also in terms of production.

We operate in compliance with ISO 9001 as well as EN 1090 and EN ISO 3834.

Materials and semi-finished products originate from trusted and proven sources.

We work exclusively with manufacturers from Poland and other EU Member States.

We work using professional machines and equipment meeting the highest quality requirements.

We have our own design office.

Our production staff is a qualified staff, who hold numerous certificates and completed trainings.

Our team of engineers takes care of the quality of the products.

We have the expertise in the field of metal working and protection sector.

We always deliver our products meeting the agreed deadlines.

# MEZZANINES

Looking for extra storage space in your warehouse? Eager to create additional storage space for your goods or relocate a machine? Every sector has its own specific applications and requirements. We feel comfortable in all of them. The offered system of warehouse mezzanines and industrial platforms is a well-thought, flexible and tailored one.

The unique rolled sections used for the construction of mezzanines and storage platforms allow for a wide range of technical options with floor load capacities from 300 to 1500 kg per one square meter and spans of up to 8 metres. The system of multiple openings in the support beams of warehouse mezzanines can be easily used for fitting of pipes for electrical energy, compressed air and fire protection systems. The most important thing is that you can decide, at any time, to expand or move a given storage platform or mezzanine to another location. The entire storage mezzanine structure can be quickly dismantled and moved to another location.







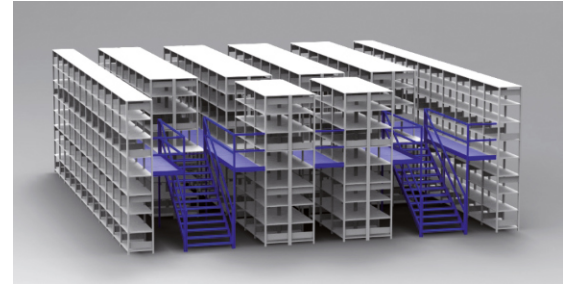
# MULTI-LEVEL INSTALLATIONS

We design warehouses and production and storage space for our Customers in order to optimally select solutions for storing of goods and their movements in the warehouse.

We select the most effective solution based on an analysis of the functionality of a warehouse, considering the use of available warehouse space, means and technical infrastructure as well as human resources.

When designing warehouse systems, our priority is to reduce operating costs of a warehouse while maintaining the maximum available occupational safety standards!

As regards a wide variety of goods and LCL goods, multi-level installations such as platforms fitted in shelving units and pallet racks are ideal solutions. This solution makes it possible to optimise the space in your warehouse by making better use of the volume of your facility and by providing quick access to your individual products. Laying floors and fitting stairs in the installation of multi-level floors and stairs in the aisles provides safe, quick and convenient access to every area of the enlarged warehouse. The additional space obtained as a result of installation of the superstructure guarantees a rapid return on your investment.



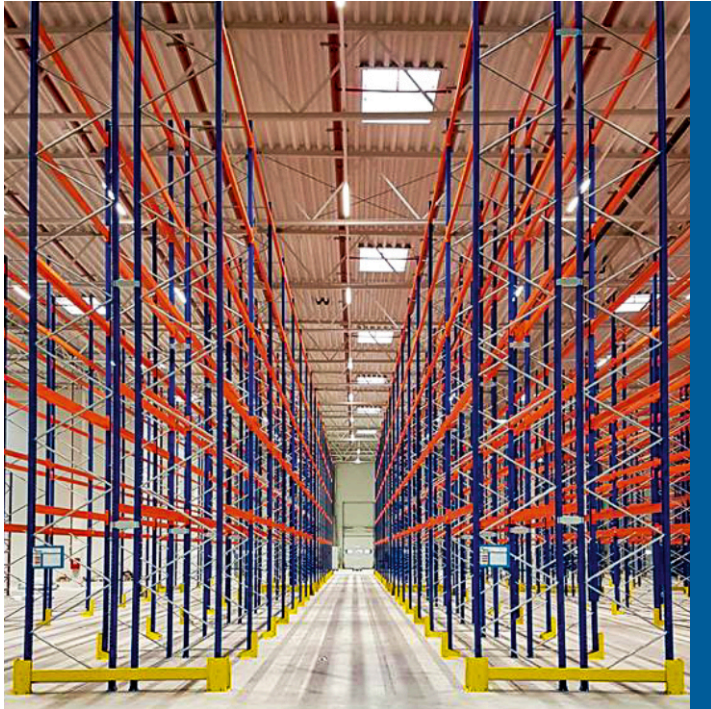






# PALLET RACKING

Pallet racking is the most common solution for storing of goods placed on euro type pallets or industrial pallets. As regards racking systems for storing pallets, we distinguish among the following types of high-bay racking: traditional in-line racking, drive-in racking, double-deep racking, push back racking and mobile racking on mobile bases. The selection of an appropriate warehouse system and type of racking system depends on the specificity of a given sector and the company's current logistical requirements.







## MOBILE RACKING

- Increased storage capacity by up to 85%
- Easier access to each pallet unit stored
- Working conditions in positive and negative temperatures, down to -28°C
- The most cost-effective solution for cold stores and freezers
- The highest safety requirements in the warehouse are ensured owing to the use of safety switches, distance sensors, traffic lights, gates and automatic lighting.

## FIFO RACK SYSTEMS

- System for storing products with a short shelf life. Suitable for use in all sectors and distribution. Ideal rotation of goods (FIFO system) - the first pallet in is also the first pallet out
- Time-saving when pallet handling
- Elimination of bottlenecks – pallets may be loaded directly from the aisle
- Optimum control of stored products. Each row of racks can be used for storage of different types of load.

## RADIO SHUTTLE

- Increasing variety: a different type of product can be stored in each channel
- Increased efficiency: increased flow of incoming and outgoing goods
- Increased storage capacity: storage depths of up to 40 m possible
- High profitability owing to the reduction in labour costs
- Reduction of the number of collisions and maintenance costs.

**Not sure which system to choose?**

Contact us and we will provide a tailored solution for your company.





# SHELVING RACKS

Shelving racks are characterised by high functionality, which is particularly useful for storing of LCL goods with a large number of assortment indexes, through the use of additional elements increasing the functionality of the racks: shelf dividers, separators, perforated side and rear walls for hangers, drawers, cabinets, clothing hangers, etc. The system works perfectly for the automotive sector (for storing parts) and in archives (for storing documents).

Large, bulky and particularly heavy items can also be stored in shelving racks - the long-span shelving units are an ideal solution. The racking structure is based on the pallet racking structure and constitutes an alternative to the same. This type of racking may be used for storing of goods both horizontally and vertically. Shelf infill: raw chipboard, laminated chipboard or steel panel.







# CANTILEVER RACKING

Cantilever racking is the ideal solution for storing of long goods and are most often used in the woodworking and metalworking sectors, sheet metal and steel working or in building depots.

Cantilever racking is characterised by a very simple structure consisting of vertical frames/columns, to which load-bearing supports and bracing for stiffening of the whole structure are attached. The load-bearing supports can be easily adjusted owing to perforations on the column. Cantilever racking is available for single- and double-sided access, in stationary version anchored to the ground as well as for mobile use on mobile bases. Cantilever racking is powder-coated for indoor use and hot-dip galvanised for outdoor use.







# ABOUT THE COMPANY

**ZMS Systemy Magazynowe sp. z o.o.** is a dynamically developing company in the warehouse sector. It guarantees professional consulting and comprehensive services for companies in the field of warehouse equipment, production facility floors, workshops and offices. Consultancy, design, delivery and assembly delivered by its own specialised teams allows it to offer complete solutions and not just products. **The production back-up facilities of the two plants** enable quick delivery of tailored solutions and fast order processing at good prices. The company's employees include experienced professionals with many years of practice in the sector and oriented towards meeting customer needs.

## AWARD LAUREATES FOR YEARS



**Gepard Biznesu**





# ISO CERTIFICATES

**CERT**  
Polska Akademia Jakości

**CERTYFIKAT**

NR: 3714/01/2024/JWS/C

JEDNOSTKA CERTYFIKUJĄCA  
Polska Akademia Jakości Cert Sp. z o.o.  
ul. Ligocka 103, bud. 2, 40-568 Katowice  
ZAŚWIADCZA, ŻE PRZEDSIĘBIORSTWO:

ZMS SYSTEMY MAGAZYNOWE SPÓŁKA  
Z OGRANICZONĄ ODPOWIEDZIALNOŚCIĄ  
87-162 Lubicz, Młyniec Drugi, ul. Leśna Aleja 3

WDROŻYŁO I STOSUJE  
WYMAGANIA JAKOŚCI W SPAWALNICTWIE  
ZGODNIE Z NORMĄ  
**PN-EN ISO 3834-2:2007**


ZAKRES CERTYFIKACJI WEDŁUG ZAŁĄCZNIKA

**PCA**  
Polska Akademia Jakości  
AC 131

PREZES ZARZĄDU  
PAJ CERT Sp. z o.o.  
  
Aleksandra Czapka

OKRES WAŻNOŚCI CERTYFIKACJI  
od 03.01.2024 do 02.01.2027

KATOWICE, 03.01.2024

**CERT**  
Polska Akademia Jakości

**CERTYFIKAT**

„POLSKA AKADEMIA JAKOŚCI CERT” Sp. z o.o.  
ul. Ligocka 103 bud. 2, 40-568 Katowice

**PCA**  
Polska Akademia Jakości  
AC 188


Certyfikat zgodności zakładowej kontroli produkcji  
2644-CPR-01/01/2024

Zgodnie z rozporządzeniem Parlamentu Europejskiego i Rady (UE) nr 305/2011 z dnia 9 marca 2011  
(rozporządzenie CPR), niniejszy certyfikat odnosi się do wyrobu budowlanego:

**Stalowe elementy konstrukcyjne**  
Produkcja konstrukcji stalowych w blacie wykonania EXC2.  
Oznakowanie CE wg ZA 3.4 (metoda 3a).  
wprowadzonego do obrotu pod nazwą producenta:  
**ZMS SYSTEMY MAGAZYNOWE SPÓŁKA Z OGRANICZONĄ ODPOWIEDZIALNOŚCIĄ**  
87-162 Lubicz, Młyniec Drugi, ul. Leśna Aleja 3  
i produkowanego w zakładzie produkcyjnym:  
**ZMS SYSTEMY MAGAZYNOWE SPÓŁKA Z OGRANICZONĄ ODPOWIEDZIALNOŚCIĄ**  
87-162 Lubicz, Młyniec Drugi, ul. Leśna Aleja 3

Niniejszy certyfikat potwierdza, że wszystkie postanowienia dotyczące oceny i weryfikacji stałości  
własności użytkowych, określone w załączniku ZA normy (norm):  
**EN 1090-1:2009 + A1:2011**  
w ramach systemu 2+ są stosowane oraz że zakładowa kontrola produkcji spełnia mające  
zastosowanie wymagania.

Niniejszy certyfikat został wydany po raz pierwszy w dniu 03.01.2024 i pozostaje ważny, dopóki  
zharmonizowana norma, metody oceny i weryfikacji stałości własności użytkowych, sam wyrob  
budowlany i warunki jego wytwarzania nie ulegną istotnej zmianie oraz pod warunkiem, że nie zostanie  
zawieszony lub cofnięty przez jednostkę notyfikowaną certyfikującą zakładową kontrolę produkcji.

  
MAREK POLESZYŃSKI  
DIREKTOR QUALITYMANAGER  
KONTROLNICA STALOWYCH I ALUMINIOWYCH

Katowice, 03.01.2024

**CERT**  
Polska Akademia Jakości

**CERTYFIKAT**



NR: 3714/12/2023/J/C


JEDNOSTKA CERTYFIKUJĄCA  
Polska Akademia Jakości Cert Sp. z o.o.  
ul. Ligocka 103, bud. 2, 40-568 Katowice  
ZAŚWIADCZA, ŻE PRZEDSIĘBIORSTWO:

ZMS SYSTEMY MAGAZYNOWE  
SPÓŁKA Z OGRANICZONĄ ODPOWIEDZIALNOŚCIĄ  
87-162 Lubicz, Młyniec Drugi, ul. Leśna Aleja 3

WDROŻYŁO I STOSUJE  
SYSTEM ZARZĄDZANIA JAKOŚCIĄ  
ZGODNY Z WYMAGANIAMI NORMY  
**PN-EN ISO 9001:2015**

W NASTĘPUJĄCYM ZAKRESIE:  
Projektowanie, sprzedaż, montaż i serwis stalowych systemów  
magazynowych. Produkcja elementów stalowych. Usługi  
malowania proszkowego.

**PCA**  
Polska Akademia Jakości  
AC 137

PREZES ZARZĄDU  
PAJ CERT Sp. z o.o.  
  
Aleksandra Czapka

OKRES WAŻNOŚCI CERTYFIKACJI  
od 18.12.2023 do 17.12.2026

KATOWICE, 18.12.2023



Registered office:

**ZMS Systemy Magazynowe Sp. z o.o.**  
Młyniec Drugi, ul. Leśna Aleja 3  
87-162 Lubicz koło Torunia

tel./fax + 48 56 674-24-20  
lub  
biuro@zms-systemy.pl

*SEND AN ENQUIRY*



**We operate in all regions of Poland.**